

PLAN

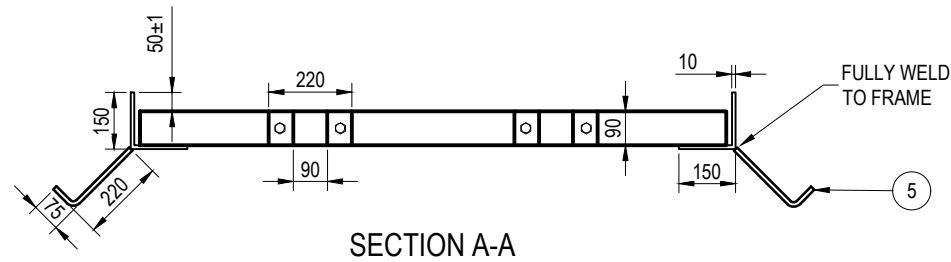
FRAME NOTES:

FF1. REFER '20 TONNE CAPACITY 1600mm x 1600mm TREE GRATE FRAME - HDG FINISH PLAN'.

PARTS LIST			
No.	ITEM	MATERIAL.	No.
1	OUTER FRAME	150 x 150 x 10 ANGLE	1
2	INNER FRAME	90 x 6 SHS C350/450	1
3	MOUNTING BOLTS	16mm HT BOLTS	12
4	MOUNTING BOLTS	220 x 90 x 10mM	12
5	IN-GROUND BOLTS	N12 x 220mm LEG	20
6	BOLT WASHER	M16 GALVANISED WASHER	24

20T HEAVY DUTY 1600mm x 1600mm TREE GRATE - FRAMING DETAIL

SCALE: 1:20



SECTION A-A

FRAME FOUNDATION NOTES:

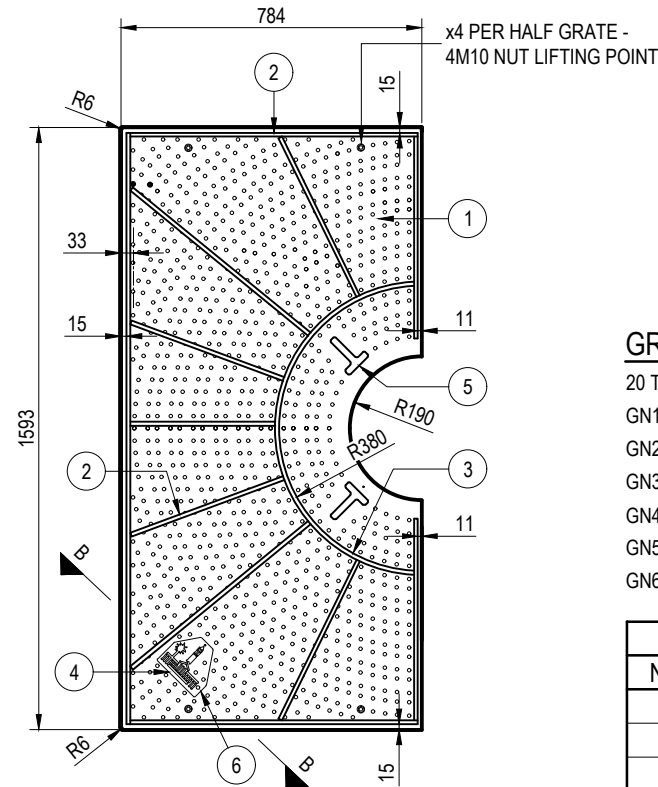
FF1. REFER '20 TONNE CAPACITY 1600mm x 1600mm TREE GRATE FRAME - HDG FINISH PLAN'.

TREE GRATE FRAME FOUNDATION DETAIL - SECTION A

SCALE 1:20

DESIGN NOTE

THE WORKING LOAD LIMIT OF THE TREE GRATE IS FOR PNEUMATIC TYRED VEHICULAR TRAFFIC UP TO 20 TONNES GROSS. THIS DRAWING WAS DEVELOPED WITH THE AGREEMENT OF URBAN FOUNTAINS AND FURNITURE. THE GRATE, FRAME AND FOOTINGS DETAILS ARE DEVELOPED FROM URBAN FOUNTAINS AND FURNITURE DRAWING NOS. HDF.01, HDF.02, HDF.03. THIS LOAD LIMIT INCLUDES THE TREE GRATE, SUPPORT FRAME AND FOOTINGS ONLY.



REFER LOGO INSET DETAIL
UNDERSIDE PLAN VIEW

GRATE NOTES:

GN1. TREE GRATE TO BE HOT SPRAYED GALVANISED PRIOR TO POWDER COATING.

GN2. ALL WELDS TO BE A MINIMUM 20mm TO LENGTH. ALL CORNERS TO HAVE VERTICAL DOWN WELDS.

GN3. ALL SPLATTER AND SLAG TO BE REMOVED PRIOR TO GALVANISING.

GN4. HOLES ARE NOT BE WELDED OVER.

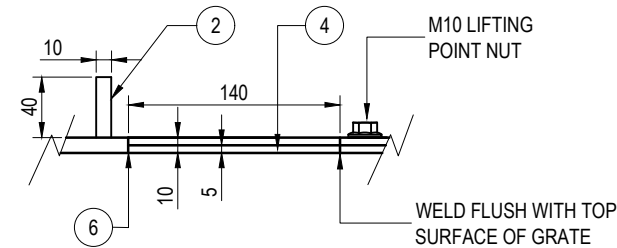
GN5. ALL STRUCTURAL WELDS TO AS1554.

GN6. REFER 'LOGO INSET DETAIL' AND 'LIFTING POINT - SECTION B-B DETAIL'.

PARTS LIST			
No.	ITEM	MATERIAL.	No.
1	GRATE TOP PLATE	10 mm STEEL	1
2	SUPPORT BARS	10mm x 40mm	12
3	ROLLED RINGS	10mm x 40mm	1
4	COUNCIL LOGO	114 x 107 HIGH	1
5	TREE SPEAR SLOT	LASER CUT	2
6	LOGO CUT OUT	5mm STEEL	1

20T HEAVY DUTY 1600mm x 8mm HOLE PATTERN DETAIL

SCALE: 1:20

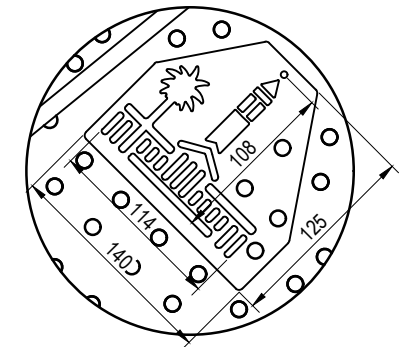


LIFTING POINT NOTES:

LP1. REFER 'UNDERSIDE PLAN VIEW DETAIL' & 'LOGO INSET DETAIL'.

LIFTING POINT - SECTION B-B

SCALE: 1:5




LOGO NOTES:

LN1. REFER 'UNDERSIDE PLAN VIEW DETAIL' & 'LIFTING POINT DETAIL'.

LOGO INSET

SCALE: 1:5

	BRISBANE CITY COUNCIL STANDARD DRAWING		PUBLISH DATE
	TREE GRATE - 20 TONNE LOAD LIMIT FABRICATION DETAILS		SCALE AS SHOWN
	SHEET 1 OF 2		DRAWING NUMBER BSD-9073
	ORIGINAL SIZE A3	REVISION A	