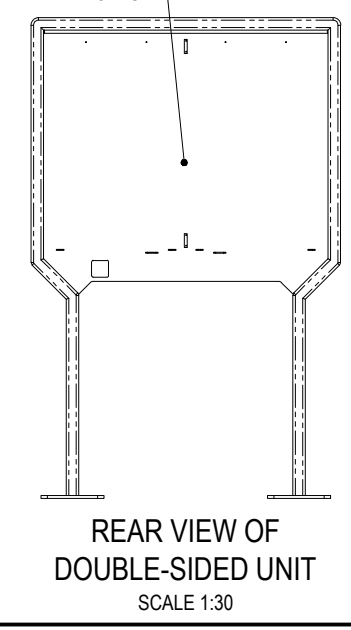
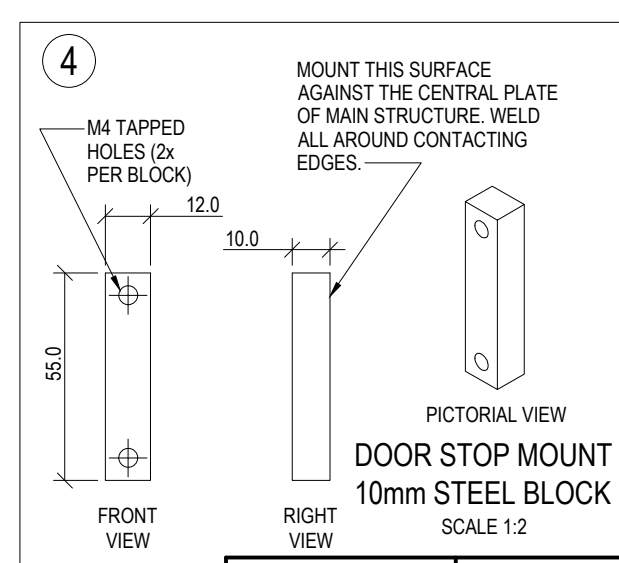
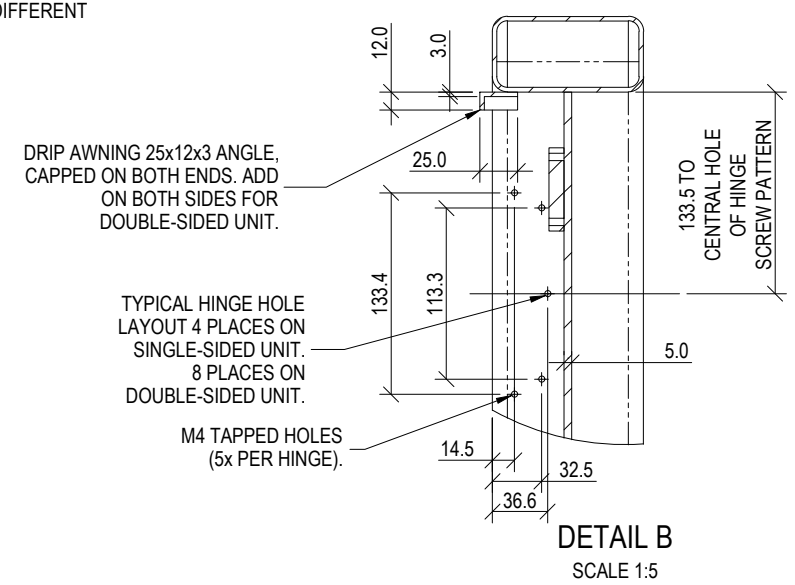


FOR DOUBLE-SIDED UNIT - BACK BECOMES EXACTLY THE SAME AS THE FRONT - ADD PINBOARD BRACKETS, WELDED NUTS, DRIP AWNING, LOGO REBATE AND M4 HINGE MOUNTING HOLES.



STRUCTURAL DESIGN REVIEWED AND CERTIFIED FOR ISSUE

NOTES

- SHOULD SITE CONDITIONS VARY FROM THE ABOVE CRITERIA, PLEASE CONTACT A SUITABLY QUALIFIED ENGINEER;
- WINDOW PANEL, PIN BOARD PANEL AND DOOR STOP BLOCK AS PER MANUFACTURER'S SPECIFICATIONS (EXCLUDED FROM THIS CERTIFICATE);
- THIS CERTIFICATE SHALL NOT BE CONSTRUED AS RELIEVING ANY OTHER PARTY OF THEIR RESPONSIBILITIES, LIABILITIES OR CONTRACTUAL OBLIGATIONS.

STANDARDS

DESIGNED IN ACCORDANCE WITH AND FABRICATED TO MEET THE FOLLOWING STANDARDS:


1. GUIDE TO ENGINEERING PRACTICE, 'PEDESTRIANS', PART 13, AUSTRROADS.
2. AS1627.4 METAL FINISHING -PREPARATION AND PRE-TREATMENT OF SURFACES - ABRASIVE BLAST CLEANING OF STEEL.
3. AS2312:2002/AMDT 1:2004, GUIDE TO PROTECTION OF IRON AND STEEL AGAINST EXTERIOR ATMOSPHERIC CORROSION, 1994.
4. AUSTRALIAN ROAD RULES, 1999, WWW.NRTC.GOV.AU
5. AS4506 -2005, METAL FINISHING-THERMOSET POWDER COATINGS.

NOTES

1. WELDING TO BE IN ACCORDANCE WITH AS1554.1 CAT GP WELDING, ALL SHARP EDGES & BURRS REMOVED.
2. PART SHOULD BE SUPPLIED CLEAN AND FREE FROM MARKS, BURRS, SCUFFS, DISTORTION AND WARPAGE.
3. DRAWING TO AS1100 DRAWING STANDARDS.
4. ALL TOLERANCES ± 1.5mm UNLESS OTHERWISE SPECIFIED.

MATERIAL

1. MATERIAL: MILD STEEL PLATE
2. COLOUR: DULUX 'METROPOLIS STORM PEARL' OR APPROVED EQUIVALENT
3. FINISH: SANDBLASTED, UNDERCOATED AND POWDERCOATED

	BRISBANE CITY COUNCIL STANDARD DRAWING		PUBLISH DATE
	COMMUNITY NOTICE BOARD		SCALE
	MAIN STRUCTURE		AS SHOWN
	SHEET 2 OF 8		DRAWING NUMBER
		BSD-7141	ORIGINAL SIZE
			A3
			REVISION
			A